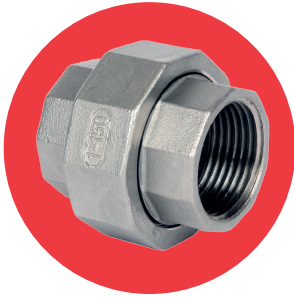


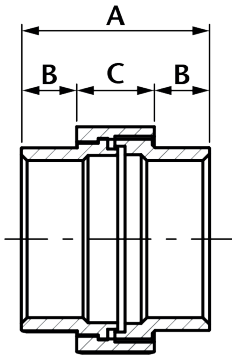
# FFU

## Flat Face Union with PTFE Gasket

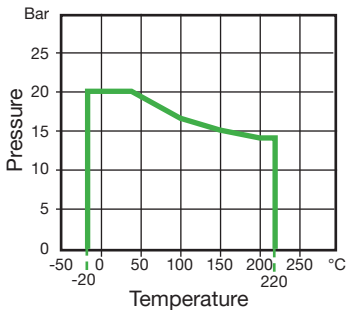


### Features

- Made from CF8M (316) Stainless Steel material and conform to ISO 4144 standard.
- Threads are to ISO 7-1 (DIN2999) BSPP Female, BSPT Male.
- Material certificates available on request.
- Tested & inspected prior to despatch.
- 12 month warranty from date of installation.
- Manufactured in accordance with ISO9001:2015 quality system.



DN	A	B	C	Kgs
1/8"	30.5	8.75	13.00	0.055
1/4"	34.5	10.35	13.80	0.083
3/8"	37.0	11.00	15.00	0.105
1/2"	40.6	12.05	16.50	0.116
3/4"	43.5	12.75	18.00	0.198
1"	51.5	15.55	20.40	0.265
1 1/4"	54.5	16.00	22.50	0.406
1 1/2"	58.0	17.00	24.00	0.483
2"	66.0	19.50	27.00	0.814
2 1/2"	75.3	22.90	29.50	1.435
3"	83.3	26.15	31.00	1.847
4"	110.3	38.15	34.00	3.124



Temperature (°C)	Non-shock maximum working pressure (bar)
-20 to 40	20
100	16.5
150	15
200	14
220	13.5

- NOTE 1 Pressure for intermediate temperatures may be determined by the interpolation method.
- NOTE 2 Temperatures indicated are those of internal fluid.
- NOTE 3 Piping loads, stresses and moments are not taken into account.