

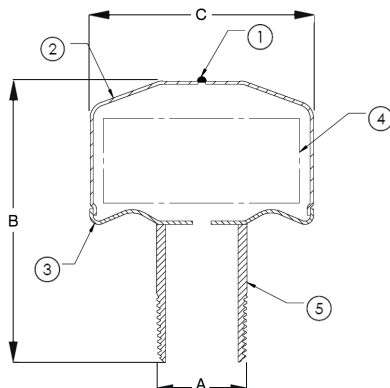
ART 1325

Stainless Steel Water Hammer Arrestor



Features

- Available with BSP or NPT threads.
- SS pre-charged stainless steel WHA, with SS bellows
- Prolonged service life of piping, valves, fittings and other devices
- Reduction in noise in water systems
- Tested and certified to PDI WH-201



Technical data

Working pressure: 150 psi
 Static pressure: 250 psi
 Max. pressure: 400psi
 Working temp: -73°C to +149°C

Pipe Sizing

Suffix	Description
AA	Conn Size 1/2" (15)
A	Conn Size 3/4" (19)
B	Conn Size 1" (25)
C	Conn Size 1" (25)
D	Conn Size 1" (25)
E	Conn Size 1" (25)
F	Conn Size 1" (25)

Technical data

	AA	A	B	C	D	E	F
Fixture	1-	1-	12-	33-	61-	114-	155-
Unit	11	11	32	60	113	154	330
A	1/2" (15)	3/4" (19)	1" (25)	1" (25)	1" (25)	1" (25)	1" (25)
B	3-1/4" (83)	3-1/4" (83)	4-1/16" (103)	4-3/8" (114)	5-1/4" (133)	7-1/32" (179)	7-1/32" (179)
C	3-1/4" (83)	3-1/4" (83)	3-1/4" (83)	3-1/4" (83)	3-1/4" (83)	3-1/4" (83)	3-1/4" (83)

N.	Part Name	Materials
1	SS Ball, Ø.125	Stainless Steel 304
2	Body	Stainless Steel 304
3	Bottom Cap	Stainless Steel 304
4	Bellows	Stainless Steel 304
5	Pipe fitting	Stainless Steel 304

DN	1/2"	1/2"	3/4"	3/4"	1"	1"
Length of pipe (Ft.)	25	100	50	200	100	50
Flow pressure P.S.I.C	30	60	60	30	60	30
Velocity in feet per sec	10	10	5	10	5	10
Required air chamber						
Volume in cubic inches	8	60	13	108	19	40
Physical size in inches	3/4"x 15"	1"x 69.5"	1"x 15"	1.1/4"x 72.5"	1.1/4"x 12.7"	1.1/4"x 27"

V1. Dimensions in mm

This data sheet is designed as a guide and should not be regarded as wholly accurate in every detail. We reserve the right to amend the specification of any product without notice.